

Chile

chile.travel

open

NATURE

A WARM WELCOME AWAITS YOU

SEATRADE
Chilean Cruise Ports

Chile, a land of contrasts

Chile is a land of diversity and contrasts. Its geography distinguishes it from other destinations. It's a tricontinental country, possessing territories in America, Antarctica and Oceania. Its territory runs 4,300 kilometers along a narrow strip between the Andes Mountain Range and the Pacific Ocean.

It also offers a wonderfully varied mix of landscapes and climates that range from natural wonders like the most arid desert in the world, to glaciers and straits in the Pacific Ocean.





CHILEAN CRUISE PORTS CORPORATION

The Chilean Cruise Ports Corporation is a private law corporation that groups the ports and port businesses that receive cruises in Chile.

Its objective is to facilitate cruise industry progress in Chile by studying the factors that affect or influence its development, the interaction between the principal players from the public and private sectors, and the active participation in actions and activities that take place in order to encourage development.

www.puertosdelconosur.cl
contacto@puertosdelconosur.cl



TurismoChile

TURISMO CHILE

Turismo Chile is a private non-profit entity, whose mission is to promote Chilean travel industry internationally. The institution combines public and private efforts, to finance promotion around the world.

Turismo Chile has witnessed tremendous growth in the world's interest in Chile from nature lovers, cultural travellers, adventurers, as well as groups planning conferences and incentive travel.

Av. Providencia 2088 Of 20, Santiago
T 56 · 2 · 2959 5500
cpt@turismochile.travel
www.turismochile.travel





SERNATUR

The Servicio Nacional de Turismo (Tourism National Service) is the public entity in charge of promoting the development of the tourist activity in Chile. The National Head Office is located in the city of Santiago and there are offices in each guarantee the quality of tourist services.

Its mission is to promote the development of tourist activity, through public and private coordination; guarantee tourist services quality; carry out national and international promotion; develop and implement information research and special programs, produce and distribute information and contribute to the country's economic and social growth.

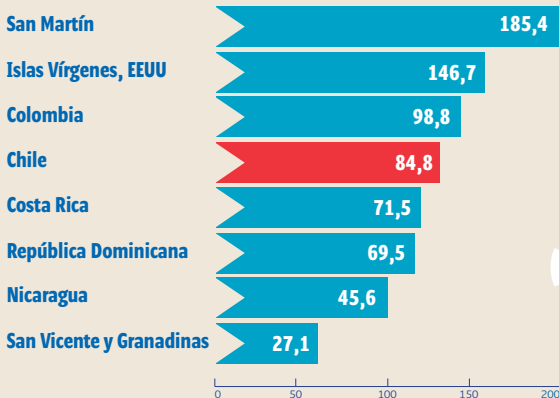
Av. Providencia 1550, Santiago
T 56 · 2 · 2731 8310
F 56 · 2 · 2731 8313
press@sernatur.cl
www.chile.travel



Cruise Statistics

*Source: Sernatur Statistics 2013

Average expense of chilean ports in the international context



Source: Economic Contribution of Cruise Tourism to the Destination Economies, FCCA, September 2012



US 95.92

Average expense 21 internacional destinations



US 84,80

Average expense 5 national destinations

PERU



Chilean Cruise Ports



Arica Port

Arica

Iquique Port

Iquique

BOLIVIA

Antofagasta Port

Antofagasta



Copiapó

ARGENTINA

Coquimbo Port

La Serena

ISLANDS

EASTER ISLAND



Easter Island Port

ROBINSON CRUSOE ISLAND



S. Juan Bautista Port

CHILOE ISLAND



Castro Port

Valparaíso Port

Viña del Mar

Santiago

Rancagua

Talca

THE ANDES

Talcahuano Port

Concepcion

Temuco

Valdivia

Osorno

Puerto Montt Port

Puerto Montt

Chacabuco Port

Coyhaique



Puerto Natales Port

Puerto Natales

Punta Arenas Port

Punta Arenas

Puerto Williams Port

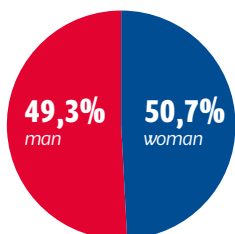
Puerto Williams



Antarctic Port

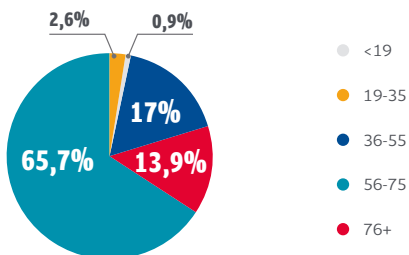
ANTARCTIC

Profile of Cruise Passengers Comming to Chile

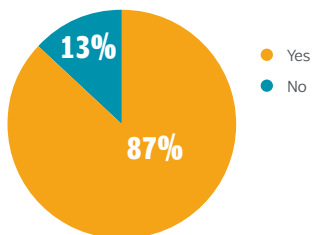


*Source: Sernatur Statistics 2013

Cruise passengers' average ages



First cruise



How do they travel?



● One



● Two



● More than two

6,2%

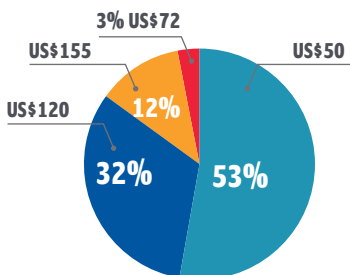
63,8%

30%

*Source: Sernatur Statistics 2013

Cruise passengers' expense in Chile

How much do they spend?



What do they spend their money on?



Food & Beverages
US\$15



Tours
US\$39



Shore
Excursions
US\$110



Handcraft &
Souvenir
US\$14

Landfalls

2016 - 2017



	<i>Landfalls</i>	<i>Passengers</i>	<i>Crew members</i>	<i>Total (passengers + crew)</i>
Arica	13	13.478	6.278	19.756
Iquique	2	924	714	1.638
Antofagasta	3	966	485	1.451
Coquimbo	15	14.057	7.096	21.153
Valparaíso	38	72.614	28.322	100.936
Isla de Pascua	4	5.400	2.160	7.560
Talcahuano	1	200	N/A	200
Puerto Montt	44	60.388	27.483	87.871
Castro	14	8.850	5.034	13.884
Puerto Chacabuco	25	28.717	13.768	42.485
Punta Arenas	57	78.279	32.899	111.178
Puerto Natales	3	471	733	1.204
Puerto Williams	10	3.375	1.173	4.548
Total	229	287.719	126.145	413.864

* Data up to November 2016

Cruise arrival in chilean ports

2011/2012 = 184

2012/2013 = 213

2013/2014 = 194

2014/2015 = 163

2015/2016 = 237

2016/2017 = 229





Chilean ports as tourist destinations

ARICA / Arica y Parinacota Region

The city of Arica (2060 km north from Santiago) is the border crossing before arriving to Perú. It has almost seven kilometers of beaches where you can surf, fish, or sail in kayaks. To the East, 165 km up in the High Plateau – Altiplano – you can find the Lauca National Park, which together with the Chungará Lake, are part of the World Network of Biosphere Reserves. They have over 130 species of birds, such as rheas, flamingos, condors, and camelids such as vicunas and guanacos.

One of the most important pre-Hispanic Chilean cultures developed in the area is the Chinchorro culture. The Chinchorro mummies are the oldest ones in the world, and a sample of them can be seen in the Archeological Museum of San Miguel de Azapa.

TECHNICAL SPECIFICATIONS

Port Location

(Latitude - Longitude)

Latitud S 18°28 31"

Longitud W 70°19 21"

Cruise ship Berth n° 3: 3

Max LOA (mts): 300

Max Draft (mts): 12,4

Max DWT (mtons): 90.228

Tender Boat´s platform: NO

Max LOA (mts): NO

Max Draft (mts): NO

Distance (mts): NO

Tidal Variation/Range (mts): 0,8



Distance to City (Kms): 1



Port Shuttle Buses: NO



Passenger Terminal Building: NO



Max Capacity (pax): NO



X-Ray gates: NO



Free Wiffi: NO



Tourist Information: YES



Handicraft selling: YES



Restrooms: NO



Universal accessibility: NO

Excursions



VISIT TO THE ARCHEOLOGICAL MUSEUM

Duration:

2 to 3 hours

Trip:

12 km away from Arica's city center. Exhibition of 20 thousand pieces that illustrate the development of different pre-Hispanic cultures. Some of the Chinchorro mummies are exhibited.

WALKING AND BIKING AROUND THE BEACHES

Duration:

Half day

Trip:

Arica is specially fit for walking and biking. There are several circuits to choose from. Also it's mandatory to visit El Morro de Arica, because it offers city layout from 130 meters high. The best at time when the sun is not too high. 21 de Mayo Street is the most popular walking place for "ariqueños".



LAUCA NATIONAL PARK

Duration:

Full day

Trip:

4-hour trip from Arica. Average height: 3.200 masl. You can see camelids such as the guanaco, vicuña, as well as the Chilean

flamingo in the Chungará Lake.

You can walk approximately 1 kilometer along the Chungará path in 30 minutes.

Chilean ports as tourist destinations

IQUIQUE / Tarapacá Region

Located 1850 km north from Santiago. It is a relatively new city that has achieved an important development due to commerce because it is a duty-free zone. It is historically linked to the mining of saltpeter. From here you can visit the Humberstone Office (1872), World's Cultural Heritage. Towards The Andes and in the middle of the high plateau, you can find the Huasco Lagoon and Salt Pan, wetlands that are the home of unique species of flora and wildlife.



TECHNICAL SPECIFICATIONS

Port Location

(Latitude - Longitude)

Latitud S 20°12' 22"

Longitud W 70°9' 34"

Cruise ship Berth n° 1: 1

Max LOA (mts): 285

Max Draft (mts): 9,30

Max DWT (mtons):

No restriction

Tender Boat´s platform:

Enabled only by exception

Max LOA (mts): 14

Max Draft (mts): 2,30

Distance (mts): 7 cables
from the anchoring point

Tidal Variation/Range (mts): 1,3



Distance to City (Kms): 1



Port Shuttle Buses: Use of shuttle bus is mandatory. Each agency performs this service on behalf of the vessel.



Passenger Terminal Building: -



Max Capacity (pax): There is no definite maximum amount



X-Ray gates: YES, 1



Free Wiffi: NO



Tourist Information: Sernatur provides an information point



Handicraft selling: Sernatur manages craftsmen´s (and other) stalls



Restrooms: YES



Universal accessibility: YES

Excursions



HUMBERSTONE SALTPETER OFFICE

Duration:

Half day

Trip:

Departure from downtown Iquique. Buildings from 1862 are World Cultural Heritage (UNESCO).

Located in the desert, Humberstone is an abandoned city, although excellently preserved, created during saltpeter boom.

PARAGLIDING

Duration:

Half day

Trip:

Gliding leaves from the Dragón Hill and lands in Cavanca Beach. This can be practiced individually or with an instructor, if you do not have enough experience.



ROCK ART: THE ALLURE OF THE GEOGLIFOS DE PINTADOS

In the Tarapacá region, 96 kilometers from the coastal city of Iquique, we can find the geoglyphs

known as the Pintados 'Geoglyphs depictions of the geoglyphs are over an area of 3 km, where close to 400 depictions of the geoglyphs art are pictured.

Declared a Monumento Histórico (Historical Monument) in 1969, they have recently generated more interest from tourists: interest: in 2010, more than 13,000 visitors came to visit these ancient cultural imprints.



Chilean ports as tourist destinations

ANTOFAGASTA / Antofagasta Region

The port city of Antofagasta (1380 km north from Santiago) emerges as the most important one of the north of Chile. Its strategic location in the coast allows for more of the copper from the mines Chuquicamata and La Escondida to be exported, mining being the most important industrial and productive activity in Chile.

Its location by the ocean is a privileged one, mainly scarce rain means year-round enjoyment in surroundings with unique natural attractions, which extend to the High Plateau and the Atacama Desert, the driest one in the world.

TECHNICAL SPECIFICATIONS

Port Location

(Latitude - Longitude)

Latitud S 23°38' 43"

Longitud W 70°25' 32"

Cruise ship Berth n° 1: ATI

Max LOA (mts): 337

Max Draft (mts): 12

Max DWT (mtons): 86.601

Cruise ship Berth n° 2: EPA

Max LOA (mts): 200

Max Draft (mts): 9

Max DWT (mtons): 30.000

Tender Boat´s platform: NO

Max LOA (mts): NO

Max Draft (mts): NO

Distance (mts): NO

Tidal Variation/Range (mts): 1,5



Distance to City (Kms): 0



Port Shuttle Buses: NO



Passenger Terminal Building: NO



Max Capacity (pax): NO



X-Ray gates: YES



Free Wifi: YES



Tourist Information: YES



Handicraft selling: YES



Restrooms: YES



Universal accessibility: YES

Excursions



LA PORTADA OF ANTOFAGASTA

Duration:

1 to 2 hours

Trip:

An image that you cannot miss and maybe one of the most photographed destinations in Chile. La Portada of Antofagasta is a natural stone arch in the middle of the Pacific Ocean, that the sea and wind erosion carved almost perfectly.

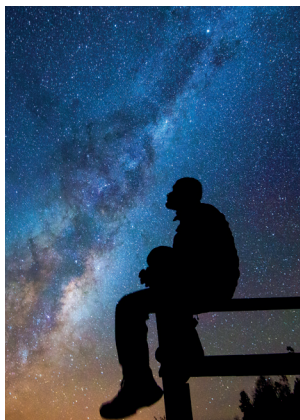
PARANAL OBSERVATORY

Duration:

Full day

Trip:

Located 2 hours and a half south from Antofagasta. It is the most powerful and advanced astronomy complex in the world. The observation Platform has four reflecting telescopes of 8.2 meters of diameter each, that can be used individually to observe objects 4 thousand million times weaker than what we can see at first sight.



ATACAMA DESERT MUSEUM

Duration:

2 to 3 hours

Trip:

Geology, astronomy and archeology exhibitions, where there used to be one-hundred year old silver smelting works. It also has an open air amphitheatre.



Chilean ports as tourist destinations

COQUIMBO / Coquimbo Region

La Serena and Coquimbo (470 km north from Santiago) concentrate intense tourist activity, because they are located along the coast, which allows the warm weather to attract many visitors to their beaches. To the east and up towards the mountains extends the Elqui Valley, with grapeyards to make pisco, the national brandy.

La Serena opens the gate to the Astronomy Route, a touristic circuit of observatories to contemplate the skies, such as Cruz del Sur, Mamalluca, Cerro Observatorio Mayu and other scientific ones with guided and programmed visits such as La Silla and Cerro Tololo.

TECHNICAL SPECIFICATIONS

Port Location

(Latitude - Longitude)

Latitud S 29° 56' 56"

Longitud W 71°20' 52"

Cruise ship Berth n° 1: 2

Max LOA (mts): 350

Max Draft (mts): 9,00

Max DWT (mtons): N/A

Tender Boat´s platform: YES

Max LOA (mts): 8,00

Max Draft (mts): 7,00

Distance (mts): N/A

Tidal Variation/Range (mts): 2



Distance to City (Kms): Inside of the city



Port Shuttle Buses: 1.000 mts



Passenger Terminal Building: YES



Max Capacity (pax): 120



X-Ray gates: YES



Free Wiffi: YES



Tourist Information: YES



Handicraft selling: YES



Restrooms: YES



Universal accessibility: Not (Only crew and passanger)

Excursions

BEACHES

Duration:

Half day

Trip:

Both cities concentrate a significant amount of tourist activity, because they are located in the coast, where warm weather attracts thousands of visitors to their beaches.



ASTRONOMY ROUTE

Duration:

Full day

Trip:

La Silla Scientific Observatory. 156 km away from downtown La Serena. It can be visited for free every Saturday, between 13.30hs. and 16.30hs. except from July to August.



PISCO ROUTE

Duration:

Full day

Trip:

The trip to the Elqui Valley, where the grapeyards are located starts in La Serena and covers approximately 105 km. You can visit several pisco factories, and participate in the different elaboration stages of plants such as Mistral, Capel, Tres Erres and Artesanos de Cochiguaz.



Chilean ports as tourist destinations

EASTER ISLAND / Valparaíso Region

Enlisted as a World Heritage Site (UNESCO) since 1995, the most remote island in the world offers the testimony of a live culture originated in Polynesia, which created immense stone sculptures, the “moai” and has a unique cultural background.

Of volcanic origin, it is a cultural and archeological paradise that shows the ancestral traditions of a society that, until its discovery in 1722, was unknown to occidental world.

Rapa Nui is geographically located in Polynesia. It is 3.526 kilometers from the mainland and 4 hours and a half away by plane from the capital Santiago.



Excursions



DIVING IN EASTER ISLAND

Duration:

3 to 4 hours/half day/full day

Trip:

Due to the transparency of the Pacific waters around the island, it is one of the world's most recognized places for diving. Divers can see green turtles and the sunken moai, in front of the Hanga Roa Bay or visit the Cliffs, where they can dive down to 36 meters of depth.



THE MOAI SHAPES AND MYSTERIES

Duration:

Full day

Trip:

It is a guided tour to visit the most renowned Moai platforms: Ahu Akahanga (known as the platform where the king "Hotu 'a Matu 'a" rests). Ahu Tongariki (200 meters long and 15 Moai), Ahu Te Pito Kura (with the tallest statue) and Ahu Nau Nau (at the incredible Oromanga beach, in the Anakena sector). Besides, visitors can discover part of the mystery about their building in the Rano Raraku volcano and quarry, where most of the moai were carved.



ORONGO

Duration:

Half day

Trip:

It starts in direction to Rano Kau volcano and Orongo, a ceremonial village where worship to Tangata Manu (bird-man) was carried out. Live the history of an ancestral competition which gathered the inhabitants of Rapa Nui each year.

Chilean ports as tourist destinations

ROBINSON CRUSOE / Valparaíso Region

Robinson Crusoe Island – the main island of the Juan Fernández Archipelago, which also consists of Santa Clara and Alejandro Selkirk–boasts a rich history. After its discovery by Spanish navigator Juan Fernández in 1574, it became an icon among sailors and a place of refuge for corsairs and pirates, who would use this piece of paradise to stock up on supplies.

It was also the place where Scotch navigator Alexander Selkirk was stranded for four years and four months beginning in October 1704. His story inspired the Daniel Defoe novel Robinson Crusoe.

A World Biosphere Reserve since 1977, it is mainly recognized because of its endemic flora and incredible fauna.



Excursions

ARCHIPELAGO JUAN FERNÁNDEZ NATIONAL PARK

Duration:

Full day

Trip:

Trekking along trails which pass through endemic millenary forests. Some of these trails, can be followed on your own and, in some others, guide services are mandatory. You can't miss taking a picture of the Red Hummingbird of Juan Fernández, a tiny endangered bird that you can find only in this island.

Raraku volcano and quarry, where most of the moai were carved.



SAN JUAN BAUTISTA

Duration:

Half day

Trip:

San Juan Bautista is the name of the town where Robinson Crusoe's inhabitants live. Their local cuisine is unmissable, based on seafood; particularly Juan Fernandez's lobster and shellfish which is the main income for most of local families.



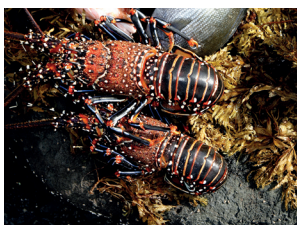
DIVING IN CUMBERLAND BAY

Duration:

Half day

Trip:

With more than 20 meters of visibility, the island offers some of the best seawaters to dive in Chile. Visitors are amazed not only by the profusion of sea life, but also by sea-lions which fearlessly approach divers.



Chilean ports as tourist destinations

VALPARAÍSO / Valparaíso Region

Valparaíso is the main port of Chile and the views of its bay and the Pacific Ocean can be seen from any point of the city; a real privilege! Its unique architecture, built over several rolling hills, is what gave this city its category of World Heritage Site by UNESCO back in 2003.

It may seem like an ordinary town, but the best way to experience this city is by walking it. You have to be willing to go up and down stairs or take one of their many centennial funicular elevators that cover part of the 44 hills that this “cultural capital of Chile” possesses, a refuge to the bohemian youth that is constantly setting trends.

According to the 2013-2014 statistics, Valparaíso is the third port in Chile to receive cruise ships, but the first in passenger quantity with 30% of all arrivals.

TECHNICAL SPECIFICATIONS

Port Location

(Latitude - Longitude)

Latitud S 33°01' 33"

Longitud W 71°38' 22"

Cruise ship Berth n°: 8

Max LOA (mts): 740

Max Draft (mts): 13,8

Max DWT (mtons): N/A

Tender Boat´s platform: NO

Max LOA (mts): NO

Max Draft (mts): NO

Distance (mts): NO

Tidal Variation/Range (mts):

0,38 A 1,53 (NRS)

*Level reduction probes, 2015

 Distance to City (Kms): 110

 Port Shuttle Buses: YES

 Passenger Terminal Building: YES

 Max Capacity (pax): 6.000

 X-Ray gates: YES

 Free Wifi: YES

 Tourist Information: YES

 Handicraft selling: YES

 Restrooms: YES

 Universal accessibility: YES

Excursions



LA SEBASTIANA, PABLO NERUDA'S MUSEUM HOUSE

Duration:

2 to 3 hours

Trip:

Curiosities and souvenirs that the poet used to collect. This is where the Nobel prize awarded, Neruda, used to spend Christmas and New Year's holidays.



CERRO ALEGRE & CONCEPCIÓN

Duration:

Half day

Trip:

Excellent view to the Valparaíso Bay, the neighboring hills and the Viña del Mar coast, from its promenade-viewing points Atkinson and Gervasoni. The area concentrates an interesting gastronomic offer with over ten first-category restaurants.



HUNDRED-YEAR-OLD ELEVATORS

Duration:

Half day

Trip:

From Cerro Concepción you can go down with the elevator named after it, and arrive directly to Valparaíso's main square. There are also 14 other elevators that climb the hillsides of different neighborhoods. It is an excellent way to see the port-city.

Chilean ports as tourist destinations

TALCAHUANO / Biobío Region

It's one of the most important ports in the country and is connected to the urban life of the city of Concepción, the region's capital. Its economy relies on industry and fishing. It's home to two ports, one of which is a naval base and the other an industrial neighborhood for steel, oil refineries and petrochemical industries, amongst others.

TECHNICAL SPECIFICATIONS

Port Location

(Latitude - Longitude)

Latitud S 36°41' 22"

Longitud W 73°0' 09"

Cruise ship Berth n°: 1

Max LOA (mts): 230

Max Draft (mts): 8,2

Max DWT (mtons): 8.000

Tender Boat´s platform: NO

Max LOA (mts) NO

Max Draft (mts) NO

Distance (mts) NO

Tidal Variation/Range (mts)

0,38 A 1,8 (NRS)

*Level reduction probes, 2015



Distance to City (Kms): 13
from Concepción



Port Shuttle Buses: NO



Passenger Terminal Building: NO



Max Capacity (pax): NO



X-Ray gates: NO



Free Wifi: NO



Tourist Information: YES



Handicraft selling: YES



Restrooms: YES



Universal accessibility: YES

Excursions



LAGUNA DEL LAJA NATIONAL PARK

Duration:

2 days

Trip:

The park forms part of a World Biosphere Reserve. It's characterized for possessing a great quantity of endemic species including condors, huemul deers and the Magellanic woodpecker.



NEVADOS DE CHILLÁN/VALLE LAS TRANCAS

Duration:

2 days

Trip:

These destinations form part of The Andes Mountain Range, where both summer excursions and snow-based activities in the winter can be enjoyed. There are very good ski slopes and thermal bath centers. In the summer, trekking and horse-riding circuits through the mountains are offered.



ALTO BIO BIO

Duration:

All day

Trip:

The first stop is a village called Ralco, where highlights include the Pehuenche Museum and the plaza which is formed in the shape of a weaving loom. The artificial lake, the Pangué, can be seen just a few kilometres outside of the village. Recreational fishing, sailing and kayak can be enjoyed on both lakes.

Chilean ports as tourist destinations

PUERTO MONTT / Los Lagos Region

It is one of the most important cities in the south of Chile and a linking point with the southernmost area of the country, with air and sea connections that take you to Coyhaique, Punta Arenas, Puerto Natales and Puerto Aysén.

It is also the closest continental city to the Chiloé archipelago, connected by planes, ferries, motorboats, and other kinds of small crafts. The local seafood market, Angelmó, is located 5 minutes away from downtown, where you can also take a boat to sail around the bay.

TECHNICAL SPECIFICATIONS

Port Location

(Latitude - Longitude)

Latitud S 41°29 00"

Longitud W 72° 57 24"

Cruise ship Berth n° 1: 2 multi-purpose sites.

Max LOA (mts): 230 mts

Max Draft (mts): 10,80 mts

Max DWT (mtons): Undefined

Tender Boat´s platform: YES

Max LOA (mts): 25 mts

Max Draft (mts): 6,0 mts

Distance (mts): Undefined

Tidal Variation/Range (mts): 7



Distance to City (Kms): In the city.



Port Shuttle Buses: Contracted at the request of the tour operator or shipping agency.



Passenger Terminal Building: YES



Max Capacity (pax): 9,000 passengers per day.



X-Ray gates: YES



Free Wifi: YES



Tourist Information: YES



Handicraft selling: YES



Restrooms: YES



Universal accessibility: No. Access is restricted to passengers.

Excursions



PUERTO VARAS

Duration:

1 to 2 days

Trip:

The city with the greatest five-star hotel offer after Santiago. Excellent restaurants with first-category gastronomy, pubs and casino. Cruce Andino is a navigation that allows you to see the Petrohué River waterfalls and Todos Los Santos Lake. The trip around the Llanquihue Lake allows you to pass through Frutillar and see the Lake Theater, and Puerto Octay, a small town declared World Cultural Heritage.



ALERCE ANDINO NATIONAL PARK

Duration:

Half day

Trip:

Activities include mainly hiking, with circuits and paths that go across larch forests. You can visit several lagoons, such as Chaiquenes, Triángulo, Fría, Sargazo and Correntoso. The park includes a mountain mass with deep valleys with almost vertical hillsides, and lakes and lagoons at different heights.



CHILOÉ

Duration:

1 to 3 days

Trip:

To reach Chiloé you have to cross the Chacao Channel by plane or ferry (56 km from the city of Puerto Montt). The island's main attractions are its culture and architecture. Chiloé churches are typical constructions, with a very particular style. Although there are over 80, only 16 of them were declared World's Cultural Heritage by UNESCO.

Chilean ports as tourist destinations

CASTRO / Los Lagos Region

It's the most important city on Chiloé Island and where the largest amount of commercial activity on the island is concentrated.

After the arrival of the first commercial flight to the island in November 2012, there was a rapid increase in the provision of 4 and 5-star hotels that took advantage of the beautiful views to be had from Castro's highest locations, the third oldest city in Chile.

TECHNICAL SPECIFICATIONS

Port Location

(Latitude - Longitude)

Latitud S 42° 28 52"

Longitud W 73° 45 32"

Cruise ship Berth n° 1: 01 multi-purpose site with 01 ramp for wheelchair access

Max LOA (mts): Dock for ships of 125 meters long.

Max Draft (mts): 5,5

Max DWT (mtons):

Undefined.

Tender Boat's platform: Ramp access.

Max LOA (mts): 15

Max Draft (mts): 2,5

Distance (mts): N/D

Tidal Variation/Range (mts) 4-5



Distance to City (Kms): In the city.



Port Shuttle Buses: Contracted at the request of the tour operator or shipping agency.



Passenger Terminal Building: YES



Max Capacity (pax): 3.500



X-Ray gates: NO



Free Wifi: YES



Tourist Information: YES



Handicraft selling: NO



Restrooms: YES



Universal accessibility: No. Access is restricted to passengers.

Excursions



THE CITY CENTER AND THE “PALAFITOS”

Duration:

Half day

Trip:

Four of the churches in Castro were declared World Cultural Heritage by UNESCO. The San Francisco Temple is one of them and is located in the center of the city. It forms part of the Chilote school of religious wood architecture. The “palafitos”, colored houses built on stilts above the water, are one of the city’s great attractions.



DALCAHUE MARKET

Duration:

Half day

Trip:

This artisanal market, principally open on Sunday mornings, maintains century-old traditions, where great numbers of artisans from Chiloé’s other islands congregate to offer their woollen textiles.



PUÑIHUIL'S PENGUIN COLONIES

Duration:

Half day

Trip:

This natural monument is formed by three islets. It’s the only place in the world where Humboldt and Magellanic penguins coexist and it can be visited via attractive maritime tours.

Chilean ports as tourist destinations

PUERTO CHACABUCO / Aysén Region

It is the main port in the Aysén Region, of the Chilean Patagonia, 15 kilometers away from the city of Puerto Aysén, with a population of nearly 1600 inhabitants. Its economy is mainly based on fishing, sea farming, and increasingly in tourism, particularly ecotourism and fly fishing.

From the port you can board some of the tourism ships, which do the Puerto Chacabuco-San Rafael Lagoon trip, an approximately 16-hour sail depending on the kind of ship that you take.

TECHNICAL SPECIFICATIONS

Port Location

(Latitude - Longitude)

Latitud S 45°46

Longitud W 72°82

Cruise ship Berth n° 1

Max LOA (mts) 195,84

Max Draft (mts) 9,6

Max DWT (mtons) N/A

Tender Boat´s platform


Max LOA (mts)

24 mts + 24 mts + 12 mts

Max Draft (mts) 6

Distance (mts) 25


Tidal Variation/Range (mts) 2,7

 Distance to City (Kms): 15

 Port Shuttle Buses: YES

 Passenger Terminal Building: YES

 Max Capacity (pax): 430 m²

 X-Ray gates: YES

 Free Wifi: YES

 Tourist Information: YES

 Handicraft selling: YES

 Restrooms: YES

 Universal accessibility: YES

Excursions



SAN RAFAEL LAGOON

Duration:

16 hours

Trip:

Catamarans set sails from Puerto Chacabuco with destination Campo de Hielo Norte and San Rafael Lagoon. The San Rafael Glacier is a World's Biosphere Reserve. The trip's highlight is drinking a glass of whisky with millennial ice in the lake.

FLY-FISHING IN PUERTO AYSÉN

Duration:

1-4 days

Trip:

Fly-fishing of trouts and salmons in different points of Aysén River. The number and variety of species make this part of Chilean Patagonia paradise for those who practice this activity.



HORSE-BACK TRIP

Duration:

Full day

Trip:

Horse-back rides visit wild landscapes that go deep into the Simpson River National Reserve, where you can see cascades in the hillsides along the road, such as La Virgen and El Velo de la Novia (Bride's Veil). Flora and wildlife including local deers, cougars and other species coexist in this territory.

Chilean ports as tourist destinations

PUERTO NATALES / Magallanes Region

Puerto Natales (3350 km south from Santiago and 246 km from Punta Arenas) is a city of 20.000 inhabitants founded in 1911 by Scottish and German immigrants that came to export lambs and wool to Europe.

Today, this small city in Patagonia has become an interesting gastronomy center, where thousands of foreign visitors come each year. It is the required way before continuing to Torres del Paine.

The boutique hotels, that use early XX century's buildings are a true evidence of the regional boom and the culinary revolution now taking place in Puerto Natales.

TECHNICAL SPECIFICATIONS

Port Location

(Latitude - Longitude)

Latitud S 51°43 25"

Longitud W 72°29 15"

Cruise ship Berth n° 1:

Puerto Natales

Max LOA (mts) 150

Max Draft (mts) 6,6

Max DWT (mtons) 4.700

Tender Boat´s platform: YES

Max LOA (mts) 12

Max Draft (mts) 5

Distance (mts) 200

Tidal Variation/Range (mts)

0,2 A 0,8 (NRS)*



Distance to City (Kms):



Port Shuttle Buses: NO



Passenger Terminal Building: NO



Max Capacity (pax): NO



X-Ray gates: NO



Free Wifi: NO



Tourist Information: NO



Handicraft selling: NO



Restrooms: NO



Universal accessibility: NO

Excursions



TORRES DEL PAINE

Duration:

Full day

Trip:

It is one of the most impressive and photogenic national parks of Chile. It was recently named the 8th Wonder of the World. The best views from the site can be obtained from Lake Nordenskjöld and Lake Pehoé.

FARM WITH LUNCH

Duration:

Half day

Trip:

There are several farms located a few km from Punta Arenas city, someone facing the mythical Estrecho de Magallanes. The typical menu includes a lamb barbecue and pisco sour, classic Chilean drink. This excursion allows to enjoy the Patagonian nature near the city.



SAILING GREY LAKE

Duration:

Half Day

Trip:

It is approximately four hours by boat to Grey Glacier. Upon arrival, the boat approaches the huge walls of ice and passengers can enjoy a glass of whiskey or pisco sour with millenary ice.



Chilean ports as tourist destinations

PUNTA ARENAS / Magallanes Region

Punta Arenas (3272 km south from Santiago) is the largest city within the Patagonia area. It is also the starting point to continue towards the sheep estates in Tierra del Fuego and Cape Horn, the most southern cape in America, where the Pacific Ocean meets the Atlantic.

To the northwest of the Brunswick Peninsula and 65 kilometers of Punta Arenas you can find the Otway Gulf penguin colonies, where the Magallanes species nest between September and April. The view allows to interact with birds in their natural habitat.

Punta Arenas has two main port: Mardones and Prat.

TECHNICAL SPECIFICATIONS | MARDONES PORT

Port Location

(Latitude - Longitude)

Latitud S 53° 09'

Longitud W 70°55'

Cruise ship Berth n° 1:

Mardones

Max LOA (mts): 250

Max Draft (mts): 14

Max DWT (mtons): 50.000

Tender Boat´s platform: NO

Max LOA (mts): NO

Max Draft (mts): NO

Distance (mts): NO

Tidal Variation/Range (mts)

0,2 A 0,8 (NRS)*

*Level reduction probes, 2015



Distance to City (Kms): 2



Port Shuttle Buses: YES



Passenger Terminal Building: NO



Max Capacity (pax): NO



X-Ray gates: NO



Free Wiffi: NO



Tourist Information: YES



Handicraft selling: YES



Restrooms: YES



Universal accessibility: YES

Excursions



PENGUIN COLONIES

Duration:

Half Day

Trip:

Observation of Magallanes penguins in their natural habitat. Departures regularly from Punta Arenas.

CITY TOUR PUNTA ARENAS

Duration:

2 a 3 hours

Trip:

The tour begins in Muñoz Gamero Square, downtown Punta Arenas. There you can see the neoclassic architecture of the buildings where the owners of sheep estates used to live. To the coast you can see old hulls of abandoned ships. You cannot miss the Punta Arenas Cemetery, which park and mausoleum have a remarkable historical and patrimonial value.



CASINO

Duration:

Evening

Trip:

Dreams Hotel in Punta Arenas offers evening activities such as live music performances and features a casino with all types of professional gambling.



Chilean ports as tourist destinations



TECHNICAL SPECIFICATIONS | PRAT PORT

Port Location

(Latitude - Longitude)

Latitud S 53° 09'

Longitud W 70°55'

Cruise ship Berth n° 1: Sur Prat

Max LOA (mts): 250 **

Max Draft (mts): 9 **

Max DWT (mtons): 60.000 **

Cruise ship Berth n° 1: Norte Prat

Max LOA (mts): 176

Max Draft (mts): 9

Max DWT (mtons): 40.000

Tender Boat´s platform: YES

Max LOA (mts): 12+12

Max Draft (mts): 3

Distance (mts): 500

Tidal Variation/Range (mts)

0,2 A 2,6 (NRS)*

* Level reduction probes, 2015

** Next Season



Distance to City (Kms): -



Port Shuttle Buses: -



Passenger Terminal Building: NO



Max Capacity (pax): 1.000



X-Ray gates: YES



Free Wiffi: YES



Tourist Information: YES



Handicraft selling: YES



Restrooms: YES



Universal accessibility: YES

Excursions



TIERRA DEL FUEGO

Duration:

Full Day

Trip:

It's one of the most unexplored territories of the country. Its beauty and exoticism have slowly started to consolidate it as an obliged itinerary among travelers that go to Patagonia. The trek to Lake Blanco is one of the best adventure activities of the area. There are trips of 3 or 4 days with great views of the Darwin Mountain Range and Victoria Island.



LOS PINGÜINOS NATURAL MONUMENT

Duration:

Half Day

Trip:

Come and be amazed by the Magellanic Penguins that welcome you on Magdalena Island and Marta Island, close to Punta Arenas. This natural monument will mesmerize you with its beautiful landscape.

Aside from penguins, take this opportunity to get to know other species like the cormorants, seagulls and the amazing sea lions.



KARUKINKA

Duration:

Full Day

Trip:

The Karukinka Park has 6 main trails of varying length and difficulty. At 6.9 kilometers, Pietro Grande hill is an example of a medium-difficulty hike that can be done in four hours. For people looking for more, the La Paciencia encompasses 66 kilometers of trails, equal to a five-day hike.

Chilean ports as tourist destinations

ANTARCTICA / Magallanes Region

Every year, about 38.000 people take the cruises that sail through the White Continent's millennial ices. Passenger crafts travel around Antártica between November and March, when weather conditions are optimal for navigation in the world's most southern seas.

Its unique landscapes, with a variety of wildlife to observe, photograph and film, surprise the visitor with their capacity to adapt and live in a inhospitable and hostile environment.



Excursions



ADMIRE ITS BIODIVERSITY

Duration:

Depends on the type of cruise

Trip:

In its 14 million square kilometers, almost all of them covered by glaciers, there are four species of penguins (Adelia, Barbijo, Papua and Emperor), albatross, petrels, pardelas, skuas, small seagulls, cormorants and Antarctic pigeons, as well as different kinds of whales.



CAMPING IN THE ANTARCTIC COAST

Duration:

The cruise takes 11 days and 10 nights

Trip:

It includes activities such as kayak or camping on the coast, from where you can climb a mountain, go trekking or sail through the different glaciers. The classic expedition lasts 11 days and 10 nights, departing and returning from the port of Ushuaia in Argentina's area of Tierra del Fuego.



OVERFLY CAPE HORN AND ANTARCTICA

Duration:

The cruise takes 6 days and 5 nights

Trip:

Antarctica XXI starts the trip in a two-hour flight from Punta Arenas, overflies Cape Horn and go to the Rey Jorge Island, the largest one of the South Shetland Islands. From there you sail during 6 days and 5 nights around the Antarctic Peninsula.







www.chile.travel

